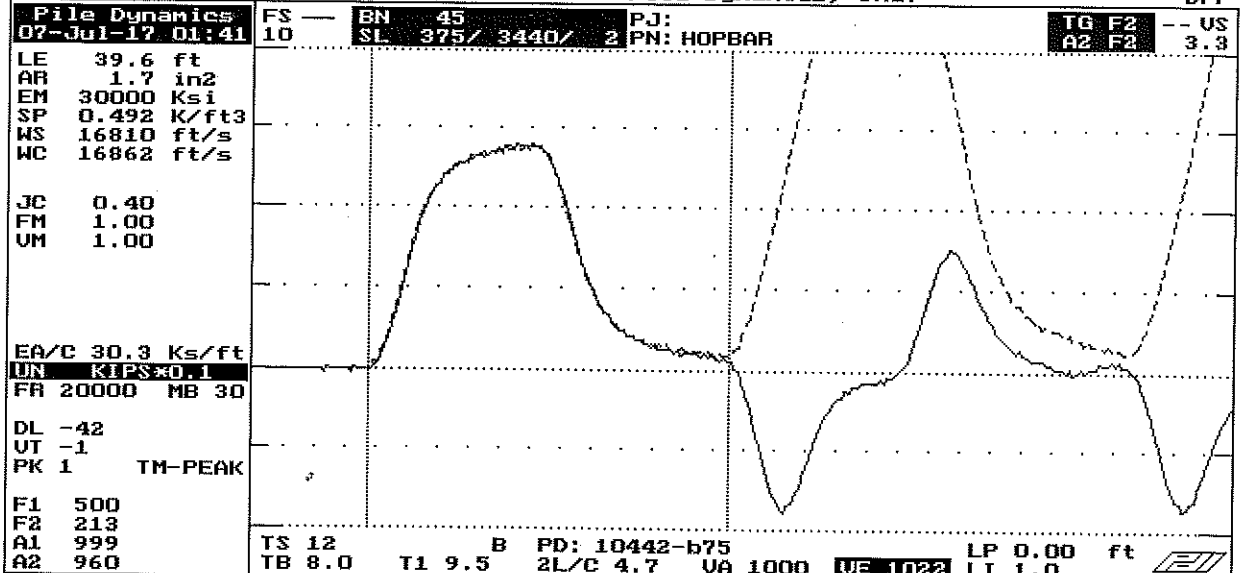


QBTA: ON [ALT-F1/BB=60]

Pile Dynamics, Inc.

DPF



ACCEPT SQ-OFF FL-OFF PR-OFF

UMX= 4.5 FMX= 70 AMX= 139  
 EMX= 0.3 MEX= 137 FUP= 1.01



contact Pile Dynamics USA  
 with your questions  
 tel USA - 216 - 831- 6131  
 fax USA - 216 - 831- 0916

ACCELEROMETER CALIBRATION N.I.S.T. Traceable

SERIAL NUMBER: 10442

CALIBRATION FACTOR: 960 %

PAK ~~(#5000)~~: DATE: 10 July 17

PDA OPERATOR: *DAV*

<-AT:PIEZORESISTIVE

OP: laine [ver:4.05]

AT:PIEZOELECTRIC->