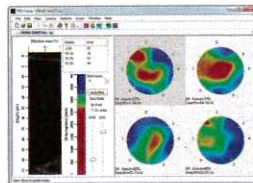


Concrete Contractor, June/July 2016 Issue  
PDI-TOMO Product Review

### New Tomography Software for Cross Hole Sonic Logging: PDI-Tomo

Pile Dynamics has released the new PDI-Tomo software for analysis of Crosshole Sonic Logging (CSL) data. The program replaces an older tomography program, with significant advantages. Crosshole Sonic Logging evaluates the integrity of the concrete of drilled shafts and other bored or cast-in-place deep foundations. Ultrasonic transmitters and receivers are inserted in the foundation and an instrument such as the Pile Dynamics' brand CHAMP-XV collects the data.



Its software CHA-W analyses the propagation of the waves emitted by the transmitters, indicating potential concrete problems.

[ForConstructionPros.com/12201889](http://ForConstructionPros.com/12201889)