

PIT-W Professional

Software for In-Depth Analysis of Data Collected with the Pile Integrity Tester



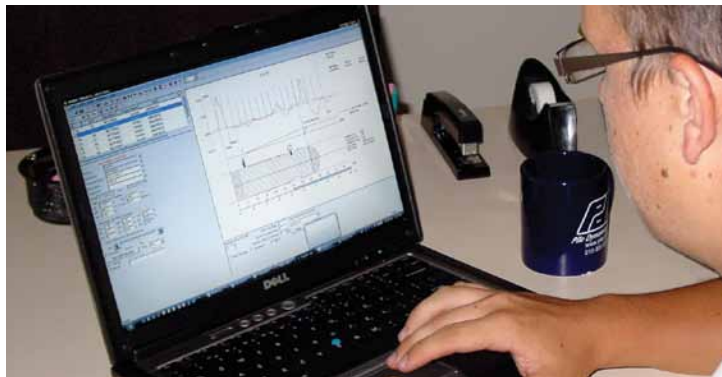
PIT-W Professional maximizes the information you can extract from data collected with the Pile Integrity Tester (PIT). PIT-W Pro is particularly useful for

- Comparing records from several piles on the same site
- Analyzing data from foundations of existing structures
- Assessing unknown foundation length
- Evaluating the severity and location of anomalies along the shaft

PIT reveals information on the integrity of a shaft. All models are furnished with the Standard version of the PIT-W software, which permits data uploading and adjustment, analysis in the time domain, record organizing and report preparation.



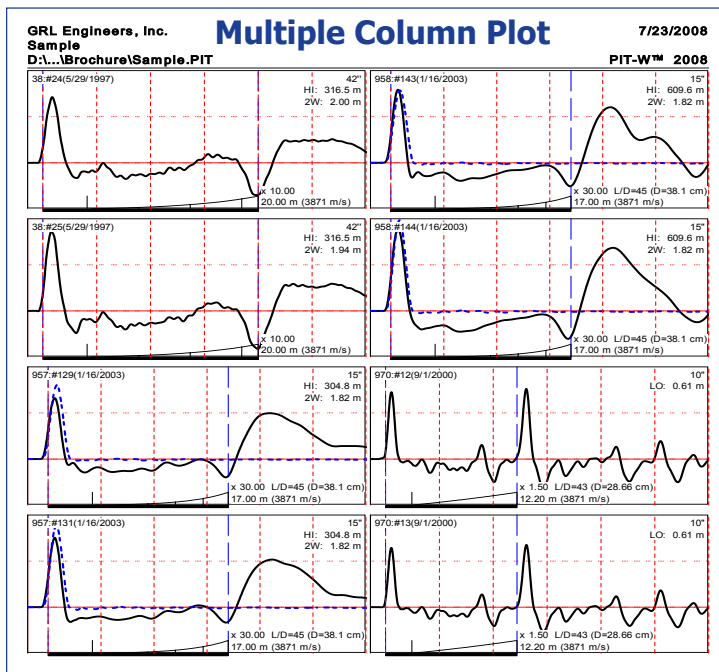
Pile Integrity Tester
PIT-FV



PIT-W Professional License is available with hardware or software key

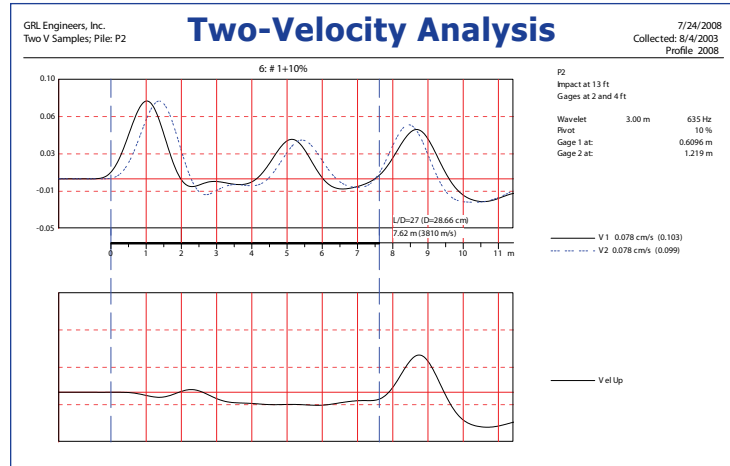
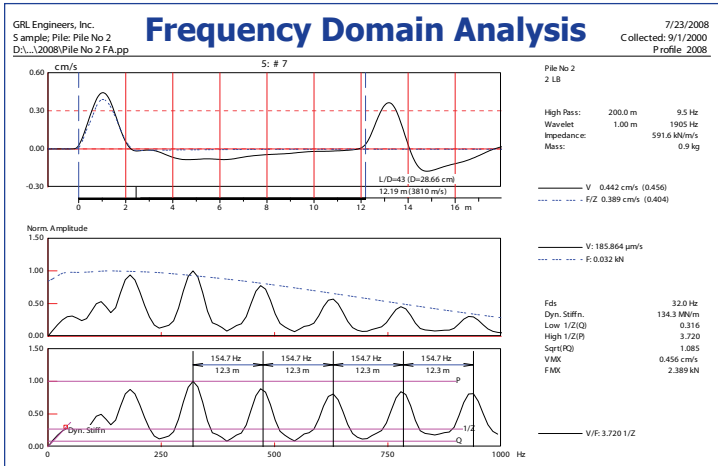
PIT-W Pro enhances PIT-W Standard with Advanced Features:

- Profile Analysis - generates a pile impedance versus depth plot to help estimate the shape of the foundation
- β -Analysis - quantifies impedance changes to help assess the severity of defects
- Frequency Domain Analysis - calculates and displays velocity spectra and peaks to assist in defect detection and location. If force data is available, also calculates Mobility and Dynamic Stiffness. Mobility may help the detection and location of defects in special situations where velocity spectra alone does not. Dynamic stiffness is useful to single out potentially weak piles (when several similar adjacent piles are tested).
- Two-Velocity Analysis - calculates wave speed using two velocity measurements and separates upward from downward traveling velocities, aiding in the interpretation of data from foundations of existing structures and/or foundations of unknown length.
- Multiple Column Plot - generates user customized summary sheets for easy record comparison.



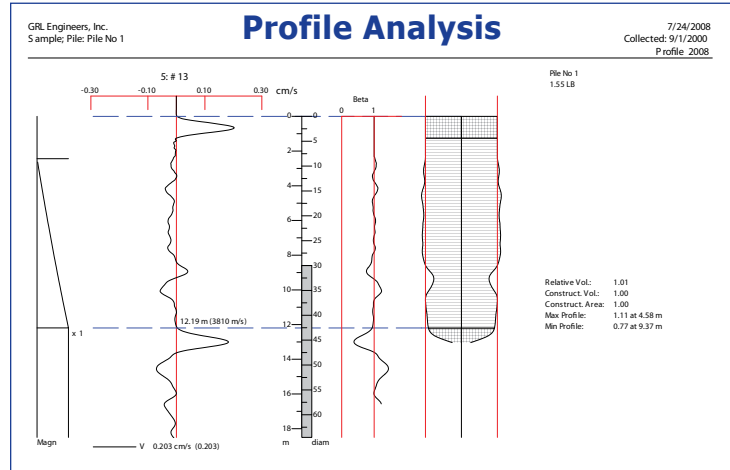
Quality Assurance for Deep Foundations

	Features	PIT-W Standard	PIT-W Professional
Velocity Data	PIT data import	✓	✓
	Record filtering and averaging	✓	✓
	Exponential amplification	✓	✓
	Re-analysis of saved data files	✓	✓
	Customized tabular output	✓	✓
	Customized report	✓	✓
	Data transfer to other applications	✓	✓
	SI, Metric and English units	✓	✓
	On screen help	✓	✓
	Velocity plot display	✓	✓
	Time Domain Analysis	✓	✓
	Frequency Domain Analysis (velocity)		✓
Profile Analysis		✓	
β-Analysis		✓	
Multiple Column Plot		✓	
Force & Velocity Data	Force-Velocity Plot	✓	✓
	Frequency Domain Analysis (complete)		✓
Two Velocity Data	Surface (Rayleigh) Wave Analysis	✓	✓
	Two-Velocity Analysis		✓



Minimum System Requirements

- Windows XP or newer
- 16 MB RAM
- 10 MB of free hard disk space
- USB port if Hardware Key is selected for licensing
- Display device
- Mouse or compatible pointing device
- Data obtained with any PIT produced after 3-27-98



Pile Dynamics, Inc.
30725 Aurora Road
Cleveland, OH 44139 USA

Printed on recycled paper.
© 2014, Pile Dynamics, Inc.
Specifications subject to change without notice.

+1-216-831-6131 info@pile.com www.pile.com