



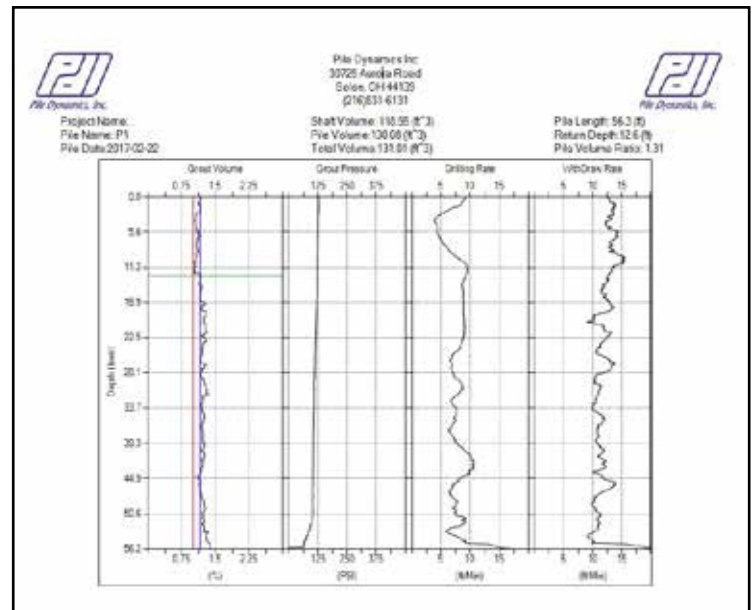
PIR-PLOT

Pile Installation Recorder (PIR-PLOT) Software

PIR-PLOT software allows you to summarize multiple piles on one chart, and to graph parameters of a specific pile

PIR-PLOT summary report includes:

- Actual and theoretical volumes
- Total length drilled
- Duration of drilling, grouting, and total installation
- Starting and return head
- Actual and requirement percent of neat line



PIR Summary Display

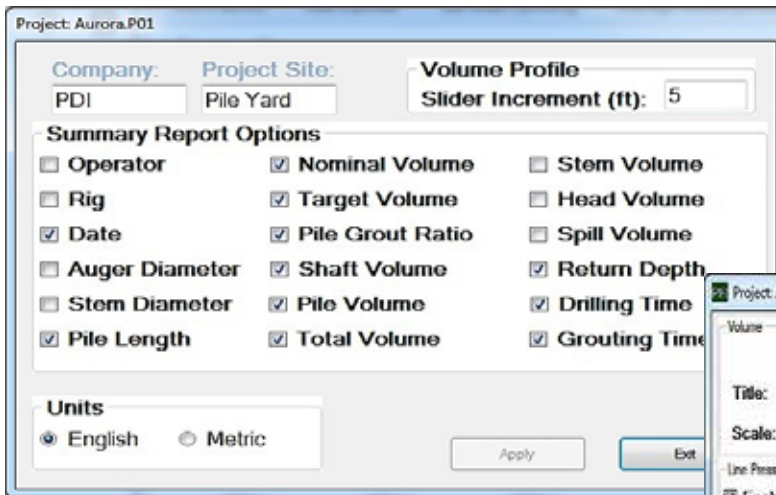
File	Project	Properties	Tools	Help	Load File						
Project Summary Report											
Company: PDI											
Project Site: PDI Yard											
Number of Piles: 85											
Total Shaft Volume: 13292.69 (ft ³)											
Total Pile Volume: 14313.86 (ft ³)											
Total Volume: 14684.3 (ft ³)											
Pile Profile											
Pile Name: 0026.28											
Max Depth: 75.1 (ft)											
Volume Ratio: 1.39											
Shaft Volume: 171.2 (ft ³)											
Pile Volume: 184.21 (ft ³)											
Total Volume: 184.88 (ft ³)											
Pile	File Length (ft)	Grout Ratio	Shaft Volume (ft ³)	Pile Volume (ft ³)	Total Volume (ft ³)	Target Volume (ft ³)	Nominal Volume (ft ³)	Drilling Time (min)	Grouting Time (min)	Return Depth (ft)	Date
0026.102	75.2	1.5	186.25	199.3	200.23	162.05	132.83	7	11	13.3	2014-05-22
0026.103	75.0	1.43	176.09	189.1	189.96	161.69	132.54	11	9	9.7	2014-05-28
0026.105	75.1	0.94	112.21	125.29	128.18	152.58	132.68	9	6	17.0	2014-05-30
0026.106	75.0	1.24	151.88	164.96	167.71	159.04	132.54	7	7	25.3	2014-05-30
0026.108	75.0	1.37	168.68	181.69	182.39	161.69	132.54	8	11	8.2	2014-05-29
0026.109	75.1	1.39	170.87	183.87	185.28	161.87	132.68	10	9	18.0	2014-05-23
0026.14	75.1	1.33	163.64	176.64	189.62	161.87	132.68	23	13	15.3	2014-05-22
0026.15	75.0	1.4	172.72	185.73	185.91	161.69	132.54	7	10	15.7	2014-05-21
0026.16	75.1	1.38	170.05	183.06	183.06	161.87	132.68	8	10	12.0	2014-05-22
0026.17	75.1	1.37	168.12	182.13	182.28	161.87	132.68	7	9	13.4	2014-05-21
0026.18	75.0	1.31	160.45	173.46	182.17	161.69	132.54	9	9	16.0	2014-05-22
0026.24	75.2	1.4	172.35	185.36	185.8	162.06	132.83	7	10	12.7	2014-05-21
0026.25	75.1	1.37	168.31	181.32	192.48	161.87	132.68	7	11	13.9	2014-05-22
0026.26	75.2	1.36	167.53	180.54	180.72	162.05	132.83	7	11	13.3	2014-05-21
0026.27	75.0	1.33	162.93	175.94	184.02	161.69	132.54	8	13	5.4	2014-05-22
0026.28	75.1	1.39	171.2	184.21	184.88	161.87	132.68	7	10	13.8	2014-05-21
0026.34	75.1	1.37	168.23	181.24	188.03	161.87	132.68	12	9	5.0	2014-05-22
0026.35	75.1	1.4	172.31	185.32	197.78	161.87	132.68	6	12	15.9	2014-05-21
0026.36	75.0	1.39	170.68	183.69	192.33	161.69	132.54	10	10	12.0	2014-05-22
0026.37	75.1	1.38	169.57	182.58	182.65	161.87	132.68	7	11	12.5	2014-05-21
0026.38	75.1	1.34	165.3	178.31	184.39	161.87	132.68	9	9	9.6	2014-05-22
0026.39	75.2	1.28	156.89	169.9	179.2	162.05	132.83	6	11	11.4	2014-05-21
0026.43	75.1	1.47	182.4	195.41	196.04	161.87	132.68	8	11	8.0	2014-05-21
0026.44	75.2	1.5	185.7	198.71	199.53	162.05	132.83	8	10	10.2	2014-05-23

PIR-PLOT graphs the following quality control variables versus depth:

- Grout pressure
- Grout volume
- Drilling rate
- Withdrawal rate
- Torque pressure
- Percent of neat line
- Drilling resistance

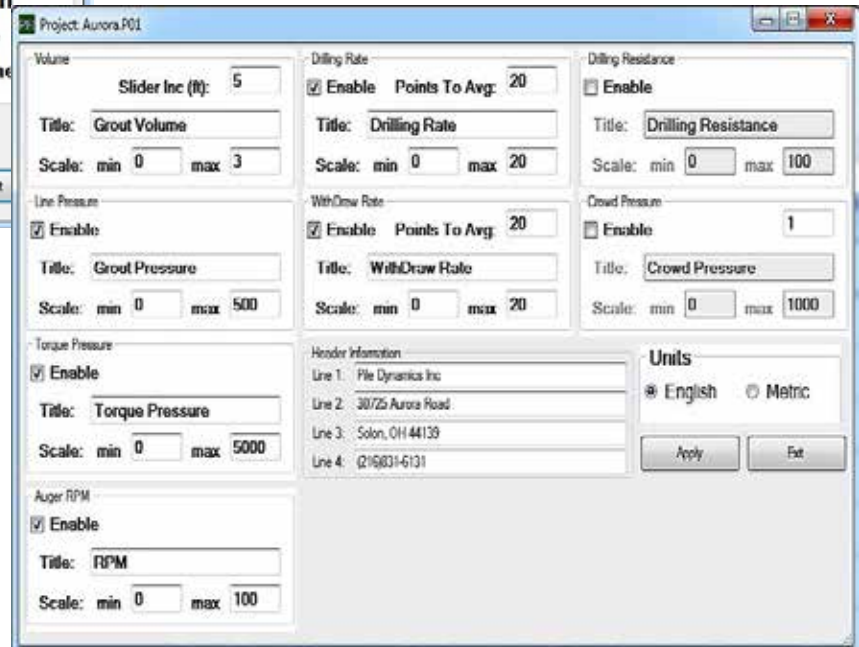


The key parameters for a precise installation are pumped grout volume and auger depth. The PIR accurately records and displays both in real time. The equipment consists of a main unit installed in the crane cabin, a depth measurement device, a magnetic flow meter, a pressure sensor to measure grout line pressure, and optional devices including a pressure sensor for determining auger torque and a proximity sensor for measuring auger rotation.



PIR Summary Properties

PIR Single Pile Properties



Pile Dynamics, Inc. (PDI) is the world leader in developing, manufacturing and supplying state of the art QA/QC products and systems for the deep foundations industry. The company is headquartered in Cleveland, Ohio, USA, with offices and representatives worldwide. For additional information visit us at www.pile.com or contact info@pile.com today.