

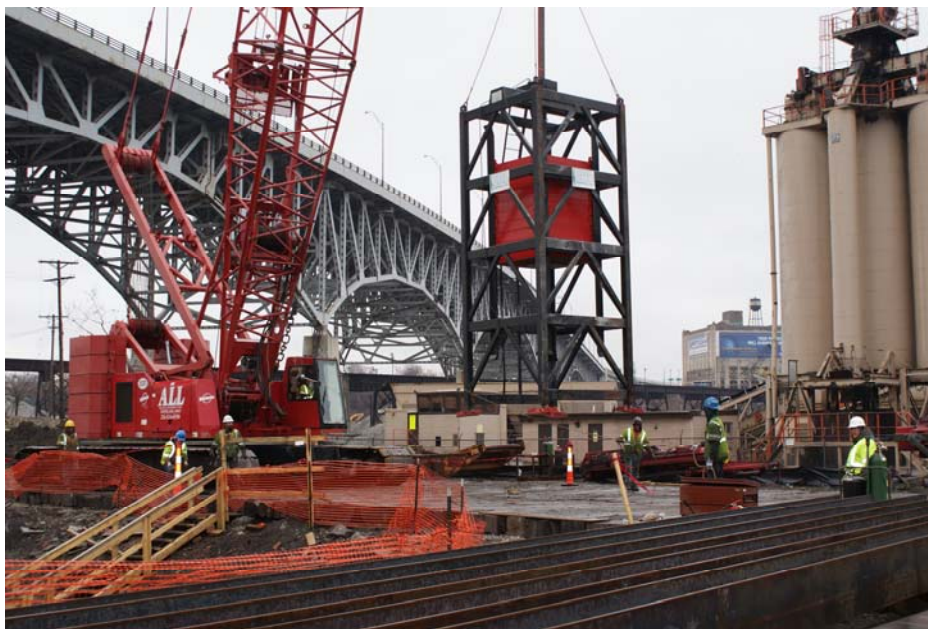
September 7, 2011

For immediate release

GRL involved in conception, testing of world's largest H piles

Earlier this year, the debut of a new steel H pile made news in the engineering and construction community. The very large new piles, HP16 and HP18, were accepted by ASTM in its standard specifications in 2010, and have respectively 16 and 18 inch size sections. Naturally, they are able to carry higher loads than their HP14 predecessors. The piles are manufactured by Nucor-Yamato Steel, Blytheville, Arkansas and distributed by Skyline Steel. A little known fact is the involvement of GRL Engineers, Inc. in the conception and testing of this innovation. GRL Vice President Mohamad Hussein, P.E. was involved in the formation of the idea for higher capacity H-Piles back in 2009. When Nucor made it a reality, GRL engineers from the Chicago and Charlotte offices monitored the installation of the first production piles during the initial investigation phase. At that time, GRL employed the Pile Driving Analyzer® (PDA) to conduct dynamic testing that evaluated the driveability and bearing capacity of the foundation elements. GRL's connection to the world's largest H piles continues, as its Cleveland office had the opportunity to again use the PDA to test the HP 18 piles during construction of the Inner Belt Bridge in Cleveland OH. The dynamic load test of the 160 feet long piles, which were driven to shale bedrock, required the use of the APPLE IV dynamic loading system during a restrike.

GRL Engineers specializes in deep foundation testing and analysis and has seven offices that serve the United States, the Caribbean, Central America and Northern South America. GRL also performs offshore foundation testing work and other complex jobs in countries across the globe.



H18 piles (foreground) were tested with the APPLE IV Dynamic Loading System

30725 Aurora Road • Cleveland, OH 44139 USA • 216.831.6131 • fax 216.831.0916 • info@pile.com • www.pile.com